





# Our Mission

.....

Umbrella Studio Association Incorporated is an inclusive, not-for-profit, members based, exhibition and studio space that drives innovation, invites experimentation, encourages excellence and inspires appreciation for Contemporary Visual Art in the North Queensland region.



## Contents

.....

About Umbrella  
Board and Staff  
President's Report

Treasurer's Report  
Director's Report  
2009 Gallery Exhibitions

Selected 2009 Events & Workshops  
Selected Marketing and Media  
Financial Statements

Above: *The Night Life of a Lilly*, Judith Bohm-Parr

# About Umbrella Studio

.....

## Background of Umbrella Studio

Umbrella Studio is an independent, not for profit organisation that generates and promotes the practice and awareness of contemporary art in North Queensland. Umbrella was established in 1986 as a working studio by a group of emerging Townsville artists. Umbrella Studio was the only artist-run initiative, and the first professional artist organisation north of Brisbane.

Since incorporating in the early 1990s, Umbrella offers practical studio based facilities and a professionally managed contemporary arts organisation with an annual program of changing exhibitions, workshops and public programs.

## Members and Participants

Umbrella Studio is a member-based organisation with nearly 250 active members, and this number is steadily

increasing. Members are committed to the principles of the organization, and are frequent visitors. Most participate in at least 6 annual events, volunteer or donate to fundraising activities at least once a year, and have been Umbrella Studio members for 3 or more years.

Umbrella has sustained an increase in the number of new members, program participants and visitors to events. Demographics of participants reveal a continual increase in young members and in young and emerging artists participating in activities.

## Geographic context and reach

Umbrella Studio sits in the centre of the access point north to Ingham, south to Bowen and west to Mt Isa. Umbrella works collaboratively with key arts organisations to include artists living in regional areas of North Queensland.



# Board and staff

.....

## Board of Management

.....

Brian Edmond	President
Gail Mabo	Vice President
Jill O’Sullivan	Secretary
Robert Barton	Treasurer
Bernadette Ashley	Member
Emma Hill	Member
Amanda Howard	Member
Alison McDonald	Member
Lynn Scott-Cumming	Member
James McElvogue	Advisor

## Staff

.....

Vicki Salisbury	Director
Kayleen McLean	Business Manager
James Ellis	Business Administration Trainee
Aaron Ashley	Casual Technical Officer
Alana Mandryk	Administrator (until November 09)
Breeanna Hudson	Casual Gallery Officer



# President’s Report

.....

My first year as President of Umbrella Studio (“Umbrella”) has been enjoyable and eventful. However, with the support of a first-class Board, my job has been made much easier. I felt the Board members all made valuable contributions and provided varied viewpoints - ranging from experienced practising artists and arts administrators (with a wealth of knowledge and history), to emerging artists, school-focused members and those able to make a commercial, “real world”, contribution. I believe this created a dynamic and robust Board and recommend that future Boards should have a similar blend.

Throughout the year we made it clear we were not going to micro-manage the day to day running of Umbrella but, rather, were more concerned with monitoring the financial performance and broader strategic progress of Umbrella. I believe Umbrella is in good financial and artistic shape in this regard.

We were also comfortable with adopting this approach due to the faith we have in the Umbrella staff. When the volume of exhibitions and other work that is referred to in the Director’s report is considered, the small band of Umbrella staff deserve our congratulations on a job very well done over the last year.

Something that has particularly made an impression on me over the past year is the energy and passion for Umbrella of the Director, Vicki Salisbury, and I am convinced that her leadership and drive has been a critical element in the success of Umbrella over the last year.

As many members will be aware, another person whose efforts have been critical in Umbrella’s success – not just over the last year but over the last 13 years – is former Administrator, Alana Mandryk. Alana has done a sterling job over that time and I would like to take this opportunity to formally thank her for her hard work and dedication over that time and acknowledge that she will certainly be missed.

With Alana having resigned to take a well-earned break the Board resolved to employ a person on a full-time basis to enable the Director to focus less on the business side of Umbrella and focus more on the artistic side.

After a number of good quality applications, short-listing and interviews, the Board were very pleased to offer the role of Business Manager to Kayleen McLean and we wish her every success in her new role.

We also initiated a Member survey which, on the whole, was very positive in its conclusions. I anticipate an annual online Members’ survey will be circulated and urge all members to participate.

There has been a steady increase in membership and, at the time writing this report, we have 254 members. A special mention is warranted for Board Member, Amanda Howard, who successfully encouraged many of her students to become Members of Umbrella.

I also want to thank James Ellis – Business Administration Trainee, and Aaron Ashley, Technical Officer, for their contribution this year; as well as all volunteers, artists, members and the general public who helped make our exhibitions and workshops as successful as they have been.

As some of you may know, in response to a letter from a number of artists concerned about the mooted closure of Pinnacles Gallery by the Townsville City Council I wrote to the Council expressing those concerns. At the time of writing this report a meeting has been arranged with the Council and, hopefully, we will have more news that I can share by the time of the AGM.

I commend our website to all members and encourage you to regularly check it out as it has a lot of very interesting information. I particularly note the Residency for emerging visual artists at Aberystwyth Arts Centre in Wales which could be a fantastic opportunity for one of our members.

Finally, thank you to the Board - Gail Mabo, Emma Hill, Bernadette Ashley, Amanda Howard, Lynn Scott-Cumming, Alison McDonald, Jill O’Sullivan and Robert Barton - for your contributions and counsel over the last year, they have been very welcome.

Brian Edmond  
President  
3 March 2010

# Treasurer's Report

.....

As was noted in last year's Annual Report, 2008 was – from a financial perspective – Umbrella Studio's biggest year on record and saw substantial growth in all areas of Umbrella's budget compared with previous years. After this 'great leap forward' in operations, it is not surprising that 2009 saw a return to a more modest rate of growth and a period of financial consolidation. In many respects, the audited financial results for 2009 closely resemble those for 2008, but adjusted for inflation in some areas and the economic downturn in others.

Income for the 2009 calendar financial year was \$354,206, up by \$36,601 from \$317,605 in 2008. Expenditure also increased by a similar proportion from \$280,285 in 2008 to \$318,094 in 2009. The net profit returned to Umbrella Studio in 2009 was \$36,111, approximately \$1200 down on last year's result but still representing a very healthy 10.2% of total income being added to reserve funds.

The Balance Sheet remains overwhelmingly healthy for Umbrella Studio at the end of 2009, despite some significant challenges throughout the year. 2009 was the first full year in which increased, average-wage salaries were paid to the Director and staff. Further, with the departure of Umbrella's long-serving Administrator, Alana Mandryk, towards the end of the year, the organisation faced a significant cash pay-out of long service and other leave entitlements. Due to well planned forward provisioning, Umbrella managed these cost imposts with no significant impact on the bottom line and retained a total of \$216,985 in total Members' Funds at the end of 2009, together with a reduction in total liabilities from \$115,237 in 2008 to \$42,625 at the year's end.

Non-operational grant income for specific projects was significantly increased in 2009. This included significant funding for special projects such as Tonite We Run (\$19,627) and Umbrella Studio's Q150 contribution (\$9,211). RADF grants received for specific projects increased by approximately \$3,500 on the previous year, while new project grants funds of \$2,400 were obtained from the Breakwater Casino Trust.

Together with CPI adjustments in operational grants from major bodies such as Arts Queensland (\$154,500) and the Visual Arts & Craft Strategy (\$61,139), these new sources of specific project funding tended to offset the decline in earned income that resulted from the completion, during early 2009, of the successful IBA Sugar Shaker and Master Class Printmaking projects. Other general areas of earned income such as artwork sales, merchandise sales, workshop fees, membership registrations and interest received continued to grow significantly in 2009, reflecting the trend established in 2008.

While grant funding remains a significant proportion of Umbrella Studio's income stream in 2009, it has continued to diversify in terms of source and application. At \$154,500, Arts Queensland's generous Operational Funding continues to reduce as a proportion of Umbrella's overall budget (approximately 40% of income). Instead, new and increasingly diverse streams of income are being sought from other sources and, for the most part, for specific exhibition and other program related projects, rather than general operations. With a 'living' arts organisation such as Umbrella Studio, this has obvious benefits for practising contemporary artists, as reflected in the huge increase in artist's fees paid in 2009: \$22,260, compared to \$6,869 in 2008.

2009 has not been the easiest year or financial climate for any arts organisation in Australia. Government funding levels have remained tight and competition for privately sourced funds has increased significantly. While far from the storm that many were predicting just 12 to 15 months ago, Umbrella Studio has adapted to the challenging conditions and recorded positive growth for the year and a healthy operating surplus and top-up to the organisation's reserve funds in 2009.

Robert Barton  
Treasurer

# Director's Report

.....

We have experienced a tremendous 2009 at Umbrella Studio. More than 300 artists have participated in an outstanding mix of exhibitions, workshops, performances and public programs. Umbrella offered 14 workshops in the Studio Downstairs ranging from a variety of print making techniques, fused/slumped glass, paper and book making, composition and colour and youth workshops. Workshops were facilitated by exhibiting artists, visiting artists and our highly skilled and diverse artist/members with record \$35,540 being paid to artists, performers, curators and workshop facilitators. Umbrella facilitated the delivery of professional development workshops including grant writing for RADF funding and various grants, Tax Basics an arts/business talk specifically for artists delivered by PricewaterhouseCoopers. We provided opportunities for arts organisations to present information to our members and others including; Australia Business Arts Foundation, Flying Arts and Arts NEXUS. Artsupport and BoardConnect are organisations that also contributed by supporting the highest levels of professionalism for our Board of Management.

The year has provided a full and stimulating program of exhibitions featuring 20 exhibitions that utilize the entire building including; Main, Access and Vault spaces, the Studio Downstairs and the newest exhibition space, our Car Park. 2009's calendar of exhibitions once again highlighted the diversity and strength of artwork produced by contemporary Queensland artists including young and emerging artists, Aboriginal and Torres Strait Island artists, mid career to senior contemporary arts practitioners.

Wheelchair access combined with limited exhibition space in Townsville makes the Studio Downstairs critical for local community groups mounting professional exhibitions. This is the second year Umbrella hosted *Creatability*, a state wide art competition produced by Disability Queensland; and *From the Streets*, works by artists experiencing homelessness, produced by Yumba Meta.

New works created in the Studio Downstairs have resulted in three travelling exhibitions including; the Indigenous print-makers display of works on paper, commissioned for the Holiday Inn, and the inaugural Cairns Indigenous Art Fair. *Ignite Youth*, a 3 week open studio, enabled young artists to create new art works for an exhibition at Perc Tucker Regional Gallery. Compact Prints 2008 International Print Exhibition and Exchange is Umbrella Studio's signature exhibition. It travelled to Victoria and to Kickarts in Cairns, and with the support of Queensland Arts Council, Compact Prints 2008 will continue touring in 2010 to venues in Queensland and NSW.

Umbrella expanded collaborations with key cultural organisations, bringing new audiences to the gallery. Across organisation activities add value to our exhibitions and existing programs by linking regional arts groups working in all genres. Examples of regional partnerships include the Coffee Concert / Artist Talk series in partnership with the Music Centre North Queensland. Other special events included the première performance of "Suite Brolga" as part of the Australian Festival of Chamber Music and Excite Youth modelling wearable glass jewellery by North Queensland artist Judith Boehm-Parr.

Artwork sales increased this year due to the Indigenous Business Australia commission of works for Townsville Holiday Inn, sales from the Cairns Indigenous Art Fair in addition to works sold from our exhibitions such as *On the Edge*.

As well as triennial core funding from the Australia Council and Arts Queensland Umbrella Studio has received project funding and in-kind support from government, business and philanthropic foundations. We are grateful to receive in-kind support from Paradise Outdoor Advertising, C.EDE and funding from our major sponsor CEMEX for *Now and Then*. We also acknowledge funding and support from Indigenous Business Australia, Breakwater Casino Fund and Perpetual Foundation. Two RADF grants from Townsville City Council supported the archiving project and a mono-print workshop/exhibition. Project funding from Arts Queensland supported *Tonite We Run* through Artist Run Initiative and *Now and Then: 150 Years of Art Making* through a Q-150 grant.

Commitment from our small team of staff ensures that best business practice is maintained in all operations and events. This year we said farewell to our long time Administrator Alana Mandryk who, after 13 years of dedication to the organisation, resigned. We thank Alana for the contribution she has made to Umbrella Studio. The role of Administrator was expanded to full time Business Manager, a strategic position. We welcome Kayleen McLean to fill this important role. She brings with her high levels of knowledge in computer data management and is well equipped to support the development of systems and procedures required to maintain our key services as well as move us forward. James Ellis is one year into his two year Business Administration traineeship and will assist Kayleen with various administrative duties. Former trainee, Aaron Ashley remains on staff as our Technical Officer, providing a high level of professionalism to our web, programs and marketing.

Upon reflection, 2009 has been a full year of outstanding achievement for Umbrella. Umbrella maintains highly



effective operations due to the vigilant guidance and ongoing support of the Board of Management Committee. Assistance from volunteers throughout the year is vital to supporting daily operations and the increasing participation of our growing membership is evidence that Umbrella effectively engages the wider community with contemporary arts. The significant role of Umbrella Studio as a professional, independent, contemporary art space becomes more significant in

a rapidly growing regional North Queensland. It has been a challenging, full and invigorating year. I feel very privileged to be working in this special organisation and I look forward to participating in its exciting future.

Vicki Salisbury  
Director



Première of *Suite Broлга* at Umbrella Studio, a partnership with the Australian Festival of Chamber Music



From Left: Musician William Barton, Australian Festival of Chamber Music Artistic Director Piers Lane, Umbrella Studio Director Vicki Salisbury, Yvette Braithwaite-Bragg (AFCM GM) and percussionist Timothy Constable at the première of *Suite Broлга* in Umbrella.



Joseph Liddy performs at a Sunday concert at the Tonite We RUN exhibition

# 2009 Gallery Exhibitions

---



## 30 January - 8 March

Broken Spirit | Larry Underwood | *Main Space*

A visual documentary providing insight into the recording, production and design of Broken Spirit's first new release in 15 years: Thinning the Predators.



## Life Inside a Triangle | Imogen Rogers | *Access Space*

An Access Space exhibition of paint/pastel works on canvas about activating/creating a sacred space through creation.



## 2050 | Selena Smith | *Vault Space*

Our earth, our destiny, will it be viable in 2050? A mixed media exploration of our planet's prospects.



## 27 March - 19 April

Tonite We RUN | RUN Crew | *Car Park Space, Studio Downstairs*

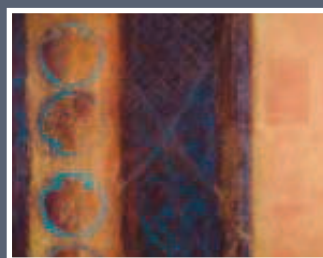
An exhibition and launch of artist collective RUN, featuring street art, installations, sculpture, graphic design, printmaking, typography, photography and a series of short animated films.



## 13 March - 19 April

2008 Creative Generation Excellence Awards in Visual Art and Design  
*Main, Access and Vault Spaces*

A touring exhibition showcasing works on paper, sculpture, film, printmaking, photography and mixed media by Queensland's top visual arts students.



## 24 April - 31 May

Elevating the Spirit | Kerry Madsen-Pietsch | *Main Space*

In mixed medias, using techniques such as stitching, painting, collage, drawing, printmaking and assemblage, this body of abstract work "acknowledges and celebrates the spirit."



### Hollywood Revisited | Andrew Sewell | *Access Space*

Andrew presents his first solo exhibition, offering insight into his iconic imagery. An exhibition of prints based on the world of Hollywood.



### The Reluctant Nun | Sheree Kinlyside | *Vault Space*

Prints from an artist book that relate to evangelical counsels of poverty, chastity and obedience, and brings fresh meaning to them.



### 5 June - 12 July

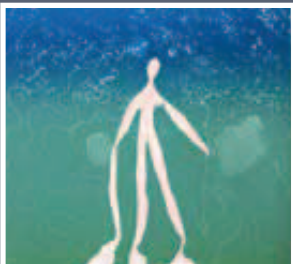
#### One The Edge | Group Exhibition | *Main & Access Space*

Visions of a tropical coastline. A touring exhibition featuring far North Queensland artists. Curated by Dr. Sasi Victoire.



### Tonite We RUN Montage | Aaron Ashley | *Vault Space*

A montage of the photos taken by *Tonite We RUN's* project manager throughout the exhibition's creation at Umbrella Studio.



### 17 July - 23 August

#### Tracks of the Past, Printing the Future | Group Exhibition | *Main & Access Spaces*

New works on paper by Aboriginal and Torres Strait Island artists who live and work in the region. The works are the result of the 08 & 09 Master Class printmakers series.



### 24 April - 31 May

#### Printers on Celluloid | Ben Southwell | *Vault Space*

Indigenous Filmmaker Ben Southwell's film documenting the Master Classes and the creation of the prints for the *Tracks of the Past, Printing the Future* exhibition.



### 28 August - 4 October

#### Q150 'Now and Then' | Group Exhibition | *Main, Access & Vault Spaces*

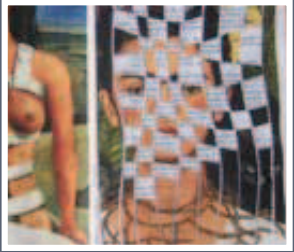
150 years of art making in North Queensland. 15 prominent artists created a unique work of art in response to an historical work of art created in the region. Curated by Ross Searle.



## 9 October - 15 November

Parred Down | Judith Bohm-Parr | *Main Space*

An exhibition of wearable glass jewellery in bold colours, juxtaposed against non-precious materials.



The Altered Book Project | Fibres and Fabrics | *Access Space*

Part of the Altered Book challenge. Participants had to provide a book and a theme. Each of the books were then rotated around the group for each of the artists to contribute to.



Genki | Pia Armitage | *Vault Space*

A photographic exhibition based on the Japanese word 'genki' (meaning good energy) looks at quite ordinary everyday activities that bring happiness to individuals, families or society in general.



## 12 October - 20 October

Creatibility | Group Exhibition | *Studio Downstairs*

Queensland wide competition for artists with a disability. A project of Kith and Kin.



## 20 - 28 November

Remember | Group Exhibition | *Studio Downstairs*

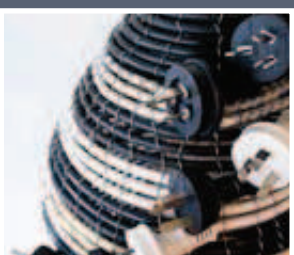
Featuring works from 19 senior art students from Calvary Christian College. Curated by Amanda Howard.



## 2 November - 8 December

From the Streets | Freedom Street Artists | *Studio Downstairs*

A special exhibition of artworks created by a group of homeless artists in Townsville. The group was established attending programs at the Reverend Charles Harris Diversionary Centre and the Drop In Centre, South Townsville.



## 20 November 2009 - 24 January 2010

E-Wasted | Umbrella Members | *Main, Access & Vault Spaces*

Members of Umbrella Studio created a showcase of artworks commenting on the millions of tonnes of electrical and electronic equipment wasted each year.

# Selected 2009 Events & Workshops

---

## 29 March

### ***A Change of Bands***

Featured free live performances from Joseph Liddy and the Skeleton Horses, Sam Goudie and other guests in the Car Park Space of Umbrella Studio as part of the *Tonite We RUN* exhibition.

## 18 April

### ***Making Paper with Marion Gaemers***

Participants learnt the basics of paper making with one of North Queensland's most creative textile artists. After this workshop they had the skills to continue to explore this technique in a direction that suited their art practice.

## 10 May

### ***Concert & Artist Talk Series***

Suspect, an original Jazz/Fusion composition, was performed by Rebecca McHutchison. In the Access Space, Andrew presented his first solo exhibition, *Hollywood Revisited*, offering insight into his technique and inspirations.

## 9, 10 & 16, 17 May

### ***Japanese Keyblock***

To coincide with *Hollywood Revisited*, wood block printer Andrew Sewell shared his passion for printing during two weekends in May

## 31 May – 5 June

### ***Murris In-ink***

Aboriginal and Torres Strait artists who live and work in the region formed Murris In-ink print makers group. Eight artists from this group participated in a five day RADF funded, mono-print workshop in the Studio Downstairs. The workshop was facilitated by Theo Tremblay and resulted in a body of new work for three exhibitions.

## 6, 7 and 13, 14 June

### ***Book Art for Prints with Sheree Kinlyside***

This intensive workshop taught the techniques the artist uses for designing and producing an editioned artist's book.

## 2 August

### ***Australian Festival of Chamber Music Concert***

*Townsville Views & Suite Brolga* are works by Dr. David Salisbury composed for William Barton on didgeridoo and Timothy Constable on percussion as part of the Australian Festival of Chamber Music. The concert coincided with *Tracks of the Past, Printing the Future*.

## 21 - 23 August

### ***Cairns Indigenous Art Fair (CAIF)***

Mono-prints and other prints were displayed in the Umbrella Display Booth at the inaugural Cairns Indigenous Art Fair held in August. Umbrella Studio was the only arts organisation from Townsville invited to participate in the CAIF.

## 30 August

### ***Townsville Guitar Orchestra***

The Townsville Guitar Orchestra celebrated Q150 by performing a range of historical to contemporary selections in this free concert. It was followed by a talk from several artists participating in the *Q150: Now and Then* exhibition.

## 4 October

### ***Composition and Colour***

A creative class with Jan Hynes to explore the possibilities of composition and colour in your art. Participants extended their potential by creating artworks that evoke a visual narrative.

## 11 October

### ***WASSA Rhythms of West Africa***

Wassa is a six-piece percussion group performing traditional rhythms from West Africa on traditional instruments. Artists featured in the 3 gallery spaces led the discussion on the process for successful collaborations; glass artist Judith Bohm-Parr, Fibres and Fabrics and Pia Armitage.

## 5 - 23 October

### ***Ignite Youth Open Studio***

A three week Open Studio that invited people to come and engage with five young artists working towards an exhibition at Perc Tucker Regional Gallery.

## 24 & 25 October

### ***The Altered Book Project***

This two day workshop follows on from the Fibres and Fabrics' Access Space exhibition. Facilitated by FF members, participants are given a specific theme to create and then pass on to others creating collectible, collaborative, and quirky artist books.

## 5 September

### ***Introduction to Mono-Printing***

This one day workshop introduced artists to the spontaneity of using the etching press to create one-off works on paper.





# Financial Statements

---

For the year ended 31 December 2009

**Umbrella Studio Association Inc**

Rod Parker  
PO Box 1230  
Aitkenvale 4814

Phone: 4755 0705  
Fax: 4755 0707  
Email: rapchacc@tpg.com.au

Income and Expenditure Statement

Detailed Balance Sheet

Notes to the Financial Statements

Depreciation Schedule

Statement by Members of Committee

Independent Auditor's Report





**UMBRELLA STUDIO ASSOCIATION INC**  
**Income and Expenditure Statement**  
**For the year ended 31 December 2009**

	2009	2008
	\$	\$
<b>Income</b>		
Artwork sales	4,891.81	2,745.79
Consultancy Fees		800.00
Bar sales	2,289.46	2,940.01
Merchandise sales	672.69	200.00
Breakwater Casino Trust	2,400.89	
Townsville City Council	500.00	
Auspice Fees		865.00
Donations & fundraising	380.15	4,043.30
Sponsorship	3,670.00	1,830.00
Arts Queensland	154,500.00	150,000.00
Australia Council	21,786.00	21,516.95
VACS Grant	61,139.73	60,000.00
RADF Grant	11,540.00	8,050.00
Professional Development Support		1,425.00
Venue Hire Fees	2,154.53	2,650.01
Equipment Hire fees	280.46	263.69
IBA Sugar Shaker Project	12,389.14	18,285.86
Master Class Printmaking	4,148.18	17,601.82
Q150 Project	9,211.08	788.92
ER Hayles Charitable Trust	1,535.60	
Tonite We Run-ARI	19,627.73	
Insurance recoveries	6,205.87	
Interest received	11,806.94	9,247.56
Membership registration	6,221.78	5,270.17
Workshop fees	5,854.48	2,081.85
DITR Trainee Grant	7,000.00	7,000.00
Employment subsidies	4,000.00	
<b>Total income</b>	<b>354,206.52</b>	<b>317,605.93</b>

The accompanying notes form part of these financial statements.

**UMBRELLA STUDIO ASSOCIATION INC**  
**Income and Expenditure Statement**  
**For the year ended 31 December 2009**

	2009 \$	2008 \$
<b>Expenses</b>		
Accounting & auditing fees	800.00	700.00
Advertising and promotion	8,199.66	3,565.46
Artist's accommodation expenses		3,591.41
Artist's fees	22,260.00	6,869.10
Artist's Living Allowance		1,160.00
Artist's travel	383.45	3,798.33
Bank fees and charges	368.17	259.70
Bar purchases	1,908.52	1,731.73
Book & catalogue purchases	9.09	100.00
Catering	2,590.75	5,873.09
Computer expenses	1,856.67	286.99
Consultants		1,090.91
Curator's fee	1,990.00	3,200.00
Conference/seminar costs	1,013.63	50.00
Depreciation	11,929.00	7,563.00
Documentation	2,765.88	3,913.78
Electricity	6,646.46	5,644.97
Exhibition hire fees	1,000.00	
Exhibition signage	345.00	590.00
Fees & charges	1,092.18	271.90
Freight	494.42	462.55
Hire/rent of Plant & Equipment	3,349.73	1,095.00
Installation fees		309.18
Insurance	3,142.99	1,283.35
Internet charges	1,488.92	1,672.35
Leave entitlements	6,048.93	2,593.09
Legal fees		909.09
Loss on disposal of assets		350.00
Materials & supplies	7,270.23	11,947.81
Machinery & equipment	2,066.55	529.41
Modelling Fees		130.00
Performer's fees	1,770.00	1,245.45
Photocopier	2,803.26	2,027.74
Postage	2,636.38	2,826.37
Printing	5,205.12	8,561.37

**The accompanying notes form part of these financial statements.**

**UMBRELLA STUDIO ASSOCIATION INC**  
**Income and Expenditure Statement**  
**For the year ended 31 December 2009**

	2009 \$	2008 \$
Prof Development		1,620.46
Project manager & Tech fee	4,460.00	
Rent on land & buildings	42,000.00	42,000.00
Repairs & maintenance	11,907.25	5,114.22
Security	1,537.07	739.60
Office amenities	953.78	1,059.26
Stationery	1,862.61	1,578.75
Subscriptions	2,066.32	1,610.72
Sundry expenses	250.00	
Superannuation	12,192.35	9,566.83
Telephone	1,840.05	1,747.02
Travel, accom & conference	2,607.48	1,069.00
Venue hire fees	218.18	
Wages	127,111.45	110,612.44
WorkCover	823.13	708.30
Writers' fee	300.00	200.00
Workshop Facilitator Fees	6,530.00	16,456.14
<b>Total expenses</b>	<u>318,094.66</u>	<u>280,285.87</u>
<b>Net income from ordinary activities</b>	<u>36,111.86</u>	<u>37,320.06</u>
<b>Net income attributable to the association</b>	<u>36,111.86</u>	<u>37,320.06</u>
<b>Items recognised directly in equity:</b>		
Increase (decrease) in retained profits due to:		
Prior years adjustments	(114.65)	
<b>Total revenues, expenses and valuation adjustments attributable to the association and recognised directly in equity</b>	<u>(114.65)</u>	
<b>Total changes in equity of the association</b>	<u>35,997.21</u>	<u>37,320.06</u>
Opening retained profits	180,987.84	143,667.78
Net income attributable to the association	36,111.86	37,320.06
Adjustments:		
Prior years adjustments	(114.65)	
<b>Closing retained profits</b>	<u>216,985.05</u>	<u>180,987.84</u>

The accompanying notes form part of these financial statements.

**UMBRELLA STUDIO ASSOCIATION INC**  
Detailed Balance Sheet As At 31 December 2009

	2009 \$	2008 \$
<b>Current Assets</b>		
<b>Cash Assets</b>		
Cash at bank	11,615.96	15,567.46
Donations account	18,751.71	12,371.56
Cash management a/c	115,000.00	158,000.00
Term Deposit - BOQ	54,536.15	50,000.00
Petty cash float	200.00	200.00
	200,103.82	236,139.02
<b>Current Tax Assets</b>		
GST collected	(1,766.33)	(9,261.52)
GST paid	2,979.49	5,572.28
	1,213.16	(3,689.24)
<b>Other</b>		
Prepayments	5,036.00	
Deposits paid	2,000.00	2,200.00
	7,036.00	2,200.00
<b>Total Current Assets</b>	<b>208,352.98</b>	<b>234,649.78</b>
<b>Non-Current Assets</b>		
<b>Property, Plant and Equipment</b>		
Plant & equip - at cost	83,393.14	81,782.23
Computer equipment	31,562.18	31,562.18
Less: Accumulated depreciation	(63,698.00)	(51,769.00)
	51,257.32	61,575.41
<b>Total Non-Current Assets</b>	<b>51,257.32</b>	<b>61,575.41</b>
<b>Total Assets</b>	<b>259,610.30</b>	<b>296,225.19</b>

The accompanying notes form part of these financial statements.

**UMBRELLA STUDIO ASSOCIATION INC**  
**Detailed Balance Sheet As At 31 December 2009**

	2009 \$	2008 \$
<b>Current Liabilities</b>		
<b>Payables</b>		
<b>Unsecured:</b>		
PAYG withholding tax	8,138.98	6,065.63
Other Creditors	454.81	(81.05)
Superannuation Liability	1,289.89	
Unexpired grants	13,860.00	90,636.13
Unexpired sponsorship	4,464.40	
	28,208.08	96,620.71
<b>Provisions</b>		
Provision for leave entitlements	14,417.17	18,616.64
	14,417.17	18,616.64
<b>Total Current Liabilities</b>	<b>42,625.25</b>	<b>115,237.35</b>
<b>Total Liabilities</b>	<b>42,625.25</b>	<b>115,237.35</b>
<b>Net Assets</b>	<b>216,985.05</b>	<b>180,987.84</b>
 <b>Members' Funds</b>		
Accumulated surplus (deficit)	216,985.05	180,987.84
<b>Total Members' Funds</b>	<b>216,985.05</b>	<b>180,987.84</b>

The accompanying notes form part of these financial statements.

## UMBRELLA STUDIO ASSOCIATION INC

### Notes to the Financial Statements

For the year ended 31 December 2009

---

#### Note 1: Statement of Significant Accounting Policies

This financial report is a special purpose financial report prepared in order to satisfy the financial reporting requirements of the Associations Incorporations Act. The committee has determined that the association is not a reporting entity.

The report has been prepared in accordance with the requirements of the Associations Incorporation Act and the following Australian Accounting Standards:

AASB 112:	Income Taxes
AASB 1031:	Materiality
AASB 110:	Events after the Balance Sheet Date
AASB 117:	Leases

No other Australian Accounting Standards, Urgent Issues Group Interpretations or other authoritative pronouncements of the Australian Accounting Standards Board have been applied.

The financial report has been prepared on an accruals basis and is based on historic costs and does not take into account changing money values, or except where specifically stated, current valuations of non-current assets.

The following specific accounting policies, which are consistent with the previous period unless otherwise stated, have been adopted in the preparation of this financial report:

**(a) Income Tax**

The association is a non-profit organisation and member income is exempt from income tax.

**(b) Fixed Assets**

Leasehold improvements and office equipment are carried at cost less, where applicable, any accumulated depreciation.

The depreciable amount of all fixed assets are depreciated over the useful lives of the assets to the association commencing from the time the asset is held ready for use. Leasehold improvements are amortised over the shorter of either the unexpired period of the lease or the estimated useful lives of the improvements.

**(c) Leases**

Lease payments for operating leases, where substantially all the risks and benefits remain with the lessor, are charged as expenses in the period in which they are incurred.

---

**UMBRELLA STUDIO ASSOCIATION INC**  
**Depreciation Schedule for the year ended 31 December, 2009**

	Total	Priv	OWDV	DISPOSAL		ADDITION		DEPRECIATION			CWDV	PROFIT		LOSS	
				Date	Consid	Date	Cost	Value T	Rate	Deprec		Priv	Upto + Above	Total -	Priv
<b>PLANT &amp; EQUIPMENT</b>															
OFFICE CHAIR	232	0.00	41	0	0	0	0	41 D	10.00	4	0	37	0	0	0
FILING CABINET	255	0.00	55	0	0	0	0	55 D	10.00	6	0	49	0	0	0
FILING CABINET	255	0.00	56	0	0	0	0	56 D	10.00	6	0	50	0	0	0
SLIDE	900	0.00	44	0	0	0	0	44 D	20.00	9	0	35	0	0	0
PROJECTOR/AUDIO															
METAL CABINET	160	0.00	41	0	0	0	0	41 D	10.00	4	0	37	0	0	0
SHARP 51CM TV	599	0.00	0	0	0	0	0	0 P	17.00	0	0	0	0	0	0
PANASONIC VCR	399	0.00	0	0	0	0	0	0 P	17.00	0	0	0	0	0	0
LIGHTING & RAILS	5,769.40	0.00	3,361	0	0	0	0	3,361 D	10.00	336	0	3,025	0	0	0
PRINTING PRESS (DONATED)	0	0.00	0	0	0	0	0	0 D	0.00	0	0	0	0	0	0
KODAK SLIDE PROJECTOR (DONATED)	0	0.00	0	0	0	0	0	0 D	0.00	0	0	0	0	0	0
MOVEABLE WALL CONSTRUCTION	1,600.00	0.00	1,060	0	0	0	0	1,060 D	7.50	82	0	1,008	0	0	0
DIGITAL CAMERA	536.36	0.00	264	0	0	0	0	264 D	15.00	40	0	224	0	0	0
AIRCONDITIONING SYSTEM	53,536.50	0.00	35,692	0	0	0	0	35,692 D	10.00	3,569	0	32,123	0	0	0
DATA PROJECTOR	1,727.27	0.00	618	0	0	0	0	618 D	30.00	185	0	433	0	0	0
AIR CONDITIONING	1,363.50	0.00	1,060	0	0	0	0	1,060 D	10.00	106	0	972	0	0	0
FILING CABINET	271.81	0.00	209	0	0	0	0	209 D	11.50	24	0	185	0	0	0
FILING CABINET	271.81	0.00	209	0	0	0	0	209 D	11.50	24	0	185	0	0	0
FILING CABINET	271.83	0.00	209	0	0	0	0	209 D	11.50	24	0	185	0	0	0
FILING CABINET	381.36	0.00	293	0	0	0	0	293 D	11.50	34	0	259	0	0	0
FILING CABINET	381.37	0.00	293	0	0	0	0	293 D	11.50	34	0	259	0	0	0
FRIDGE	968.18	0.00	677	0	0	0	0	677 D	15.00	102	0	575	0	0	0
HANGING RAIL	1,383.25	0.00	1,045	0	0	0	0	1,045 D	13.33	139	0	906	0	0	0
DISHWASHER	400.00	0.00	234	0	0	0	0	234 D	25.00	59	0	175	0	0	0
DIGITAL CAMERA	616.38	0.00	253	0	0	0	0	253 D	40.00	101	0	152	0	0	0
VIDEO CAMERA	894.55	0.00	364	0	0	0	0	364 D	40.00	146	0	218	0	0	0
PROJECTOR SCREEN	1,191.62	0.00	804	0	0	0	0	804 D	20.00	161	0	643	0	0	0
CD PLAYER	231.79	0.00	101	0	0	0	0	101 D	40.00	40	0	61	0	0	0
PA SYSTEM	727.26	0.00	537	0	0	0	0	537 D	16.67	90	0	447	0	0	0
STATIONERY CUPBOARD	404.55	0.00	328	0	0	0	0	328 D	13.33	44	0	284	0	0	0
DATA PROJECTOR	1,263.64	0.00	956	0	0	0	0	956 D	20.00	191	0	765	0	0	0
KILN & POTTERS WHEELS (ON LOAN) (DONATED)	0.00	0.00	0	0	0	0	0	0 D	0.00	0	0	0	0	0	0
PLASMA TV (DONATED)	0.00	0.00	0	0	0	0	0	0 D	0.00	0	0	0	0	0	0
SHED IN CARPORT	1,610.91	0.00	0	0	0	0	0	1,611 D	5.00	42	0	1,569	0	0	0

**UMBRELLA STUDIO ASSOCIATION INC**  
**Depreciation Schedule for the year ended 31 December, 2009**

	Total	Priv	OWDV	DISPOSAL		ADDITION		DEPRECIATION		Priv	CWOV	PROFIT		LOSS	
				Date	Consid	Date	Cost	Value T	Rate			Deprec	Up to + Above	Total -	Priv
	78,582		48,854		0	1,811	50,465	5,604	0	0	44,861				
							Deduct Private Portion	0							
							Net Depreciation	5,604							
<b>COMPUTER EQUIPMENT</b>															
COMPUTER	1,500.00	0.00	291		0	0	291 D	37.50	109	0	182	0	0	0	0
LAPTOP COMPUTER	1,000.00	0.00	303		0	0	303 D	50.00	152	0	151	0	0	0	0
COMPUTER WORKSTATION	2,242.73	0.00	2,169		0	0	2,169 D	50.00	1,085	0	1,084	0	0	0	0
COMPUTER WORKSTATION	2,242.73	0.00	2,169		0	0	2,169 D	50.00	1,085	0	1,084	0	0	0	0
COMPUTER WORKSTATION	2,242.73	0.00	2,169		0	0	2,169 D	50.00	1,085	0	1,084	0	0	0	0
COMPUTER DESIGN STATION	2,500.00	0.00	2,418		0	0	2,418 D	50.00	1,209	0	1,209	0	0	0	0
FILE SERVER	2,316.18	0.00	2,242		0	0	2,242 D	50.00	1,121	0	1,121	0	0	0	0
2 MONITORS & SOFTWARE	427.27	0.00	413		0	0	413 D	50.00	206	0	207	0	0	0	0
UPS	236.36	0.00	228		0	0	228 D	50.00	114	0	114	0	0	0	0
SOFTWARE	250.00	0.00	242		0	0	242 D	50.00	121	0	121	0	0	0	0
8 PORT SWITCH	80.00	0.00	77		0	0	77 D	50.00	38	0	39	0	0	0	0
	15,040		12,721		0	0	12,721	6,325	0	0	6,386				
							Deduct Private Portion	0							
							Net Depreciation	6,325							



**UMBRELLA STUDIO ASSOCIATION INC**  
**Statement by Members of Committee**  
**For the year ended 31 December 2009**

---

The Committee has determined that the association is not a reporting entity and that this special purpose financial report should be prepared in accordance with the accounting policies outlined in Note 1 to the financial statements.

In the opinion of the Committee the Income and Expenditure Statement, Detailed Balance Sheet and Notes to the Financial Statements:

1. Presents fairly the financial position of UMBRELLA STUDIO ASSOCIATION INC as at 31 December 2009 and its performance for the year ended on that date.
2. At the date of this statement, there are reasonable grounds to believe that the association will be able to pay its debts as and when they fall due.

This statement is made in accordance with a resolution of the Committee and is signed for and on behalf of the Committee by:



---

BRIAN EDMOND  
President



---

ROBERT BARTON  
Treasurer

26 February, 2010

**UMBRELLA STUDIO ASSOCIATION INC**  
**Independent Auditor's Report to the Members**

---

**Scope**

I have audited the attached financial report, being a special purpose financial report comprising the Statement by Members of the Committee, Income and Expenditure Statement, Detailed Balance Sheet, and Notes to the Financial Statements for the year ended 31 December 2009 of UMBRELLA STUDIO ASSOCIATION INC. The Committee is responsible for the financial report and has determined that the accounting policies used and described in Note 1 to the financial statements which form part of the financial report are appropriate to meet the requirements of the Associations Incorporations Act Queensland and are appropriate to meet the needs of the members. I have conducted an independent audit of this financial report in order to express an opinion on it to the members of UMBRELLA STUDIO ASSOCIATION INC. No opinion is expressed as to whether the accounting policies used are appropriate to the needs of the members.

The financial statements have been prepared for the purpose of fulfilling the requirements of the Associations Incorporation Act Queensland. I disclaim any assumption of responsibility for any reliance on this report or on the financial report to which it relates to any person other than the members, or for any purpose other than that for which it was prepared.

My audit has been conducted in accordance with Australian Auditing Standards. My procedures included examination, on a test basis, of evidence supporting the amounts and other disclosures in the financial report, and the evaluation of significant accounting estimates. These procedures have been undertaken to form an opinion whether, in all material respects, the financial report is presented fairly in accordance with the accounting policies described in Note 1 so as to present a view which is consistent with my understanding of the association's financial position, and performance as represented by the results of its operations and its cash flows. These policies do not require the application of all Accounting Standards and other mandatory professional reporting requirements in Australia.

The audit opinion expressed in this report has been formed on the above basis.

**Audit opinion**

In my opinion, the financial report presents fairly, in accordance with the accounting policies described in Note 1 to the financial statements, the financial position of UMBRELLA STUDIO ASSOCIATION INC as at 31 December 2009 and the results of its operations for the year then ended.

Signed on 26 February 2010:



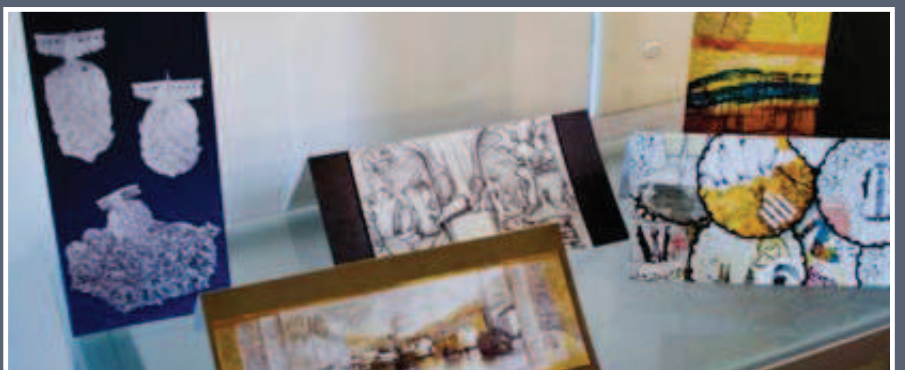
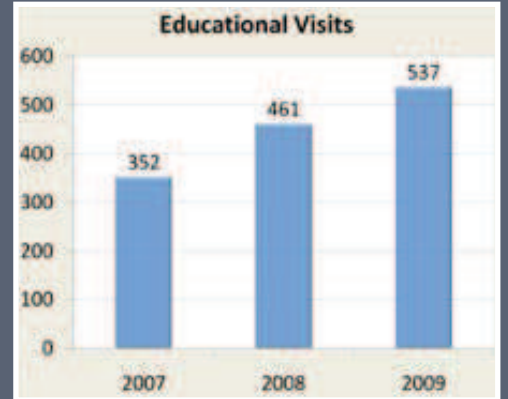
---

Rod Parker

Chartered Accountant

Unit 2/35 Fleming Street Aitkenvale Qld 4814

---





Umbrella Studio Contemporary Arts  
482 Flinders Street,  
Townsville, QLD 4810

[www.umbrella.org.au](http://www.umbrella.org.au)

Phone & Fax: (07) 4772 7109  
9-5pm Monday-Friday, 9-1pm Sunday

[info@umbrella.org.au](mailto:info@umbrella.org.au)

