

The background is an abstract composition of various shades of blue. A prominent feature is a large, dark, circular shape in the lower right quadrant, resembling a moon. A thin, curved line, possibly representing a celestial path or a shadow, arcs across the upper right portion of the image. The overall texture is layered and painterly, with some areas appearing more saturated than others.

lynn scott-cumming

moon phase:
chasing transcendence

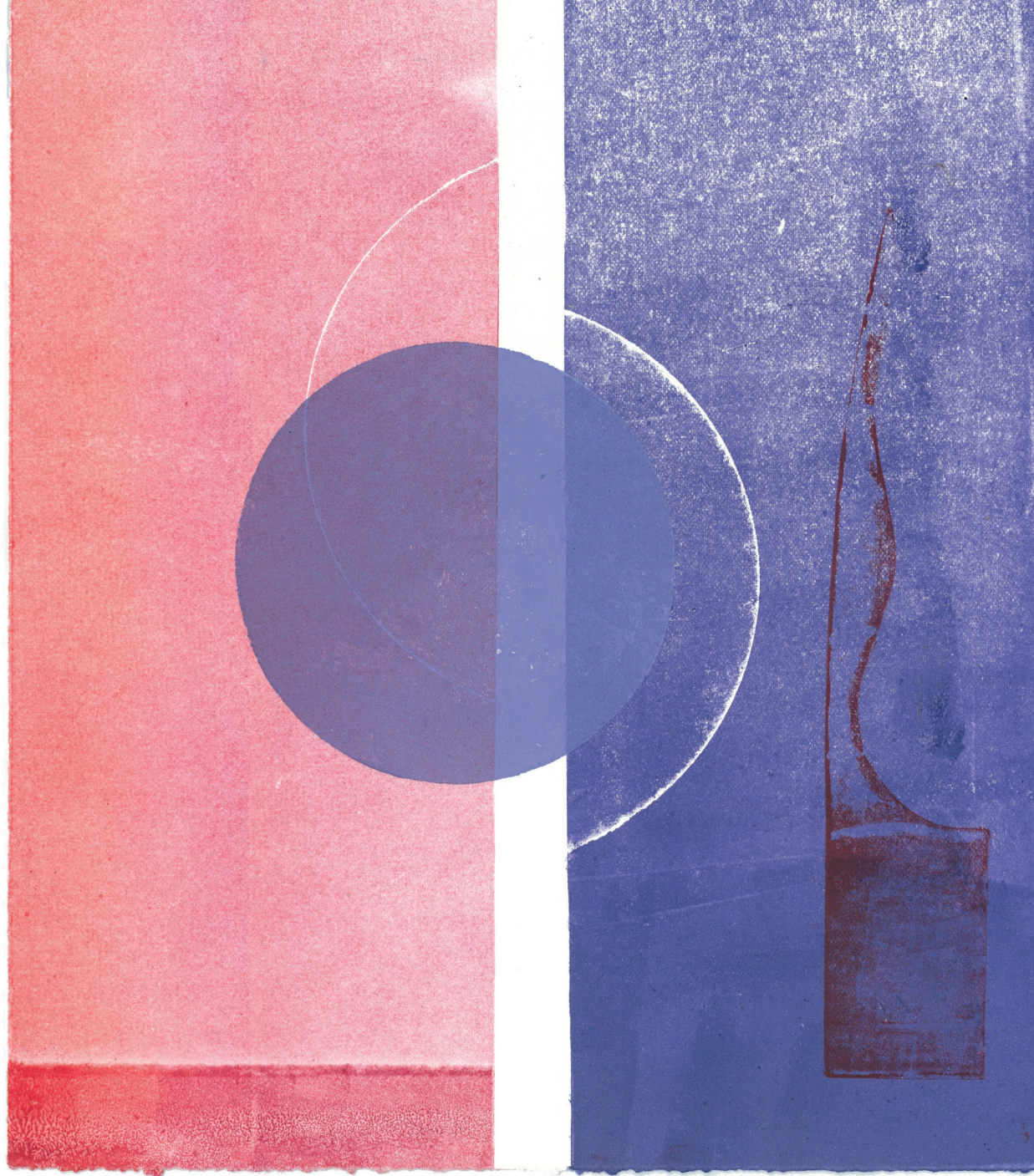
Lynn Scott-Cumming: Artist and Author

Lynn Scott-Cumming is an artist, writer and teacher with over forty years' experience in the arts. Holding a *Master of Creative Arts* from James Cook University, Lynn's creative work spans multiple visual art disciplines including painting, printmaking, installations and sculpture. In addition, Lynn is a prolific author with a passion for writing poetry and fantasy books.

The moon theme of this emotive exhibition centres on Lynn's long-held fascination since childhood for the symbolism and sublimity of the moon's emblematic existence. Eschewing conventional or trite representations of the moon, Lynn instead chooses abstract and symbolic shapes to convey, in Lynn's own words "*a sense of mystery, divinity, and mesmerising allure*". As Rothko used symbolic colour as an emotional engagement to the onlooker, Lynn too intuitively draws on the relationships and symbolism of colours to each other as a colloquy to summon intangible perceptions of spirituality and wonder to her imagery. Through this emblematic alliance of abstract shapes and colour, the observer becomes a participant in conversing with the layers of multiple interpretations within each work.

Lynn's poems complement several of the works, although they are not meant as a descriptor of each work. In response, the associated image may start the dialogue but then the text takes its own journey. To quote Lynn, each of these excursions end "*god knows where?*". This divergent path thus offers each viewer yet another mysterious journey into considering the significance and challenges posed by image and text.





Each image is printed as a unique state and demonstrates Lynn's innovative and inventive approach to printmaking by her use of a wide variety of techniques and unusual materials. Each print was printed and overlaid often adding multiple layers of colour and shapes through various combinations of etching, drypoint, and relief. Shapes and glyph plates were created from recycled plastics, such as milk bottles, packaging, used plastic cutting boards and even the thin black plastic at the base of Woolworths shopping bags. Apart from using conventional printmaking tools, Lynn also used a Dremel, sandpaper and various scraping tools. She even achieved stone textures by running a car wheel over plastic. Lynn's successful and intuitive use of these disparate elements stems from a long history of experimentation with found materials.

An active member of Umbrella Studio Contemporary Arts since 1989, Lynn continues to be a valued and dedicated volunteer who also acts as a joint facilitator for the use of the Umbrella Makerspace. Lynn's large body of work for this exhibition was all created and printed in this space.

Lynn is to be congratulated on this exceptional and thoughtful body of work in print and text that so successfully interprets her unique vision of the symbolic meanings and ethereal aspect of the moon and its phases. I look forward to her next project indeed!

Dr Jill O'Sullivan



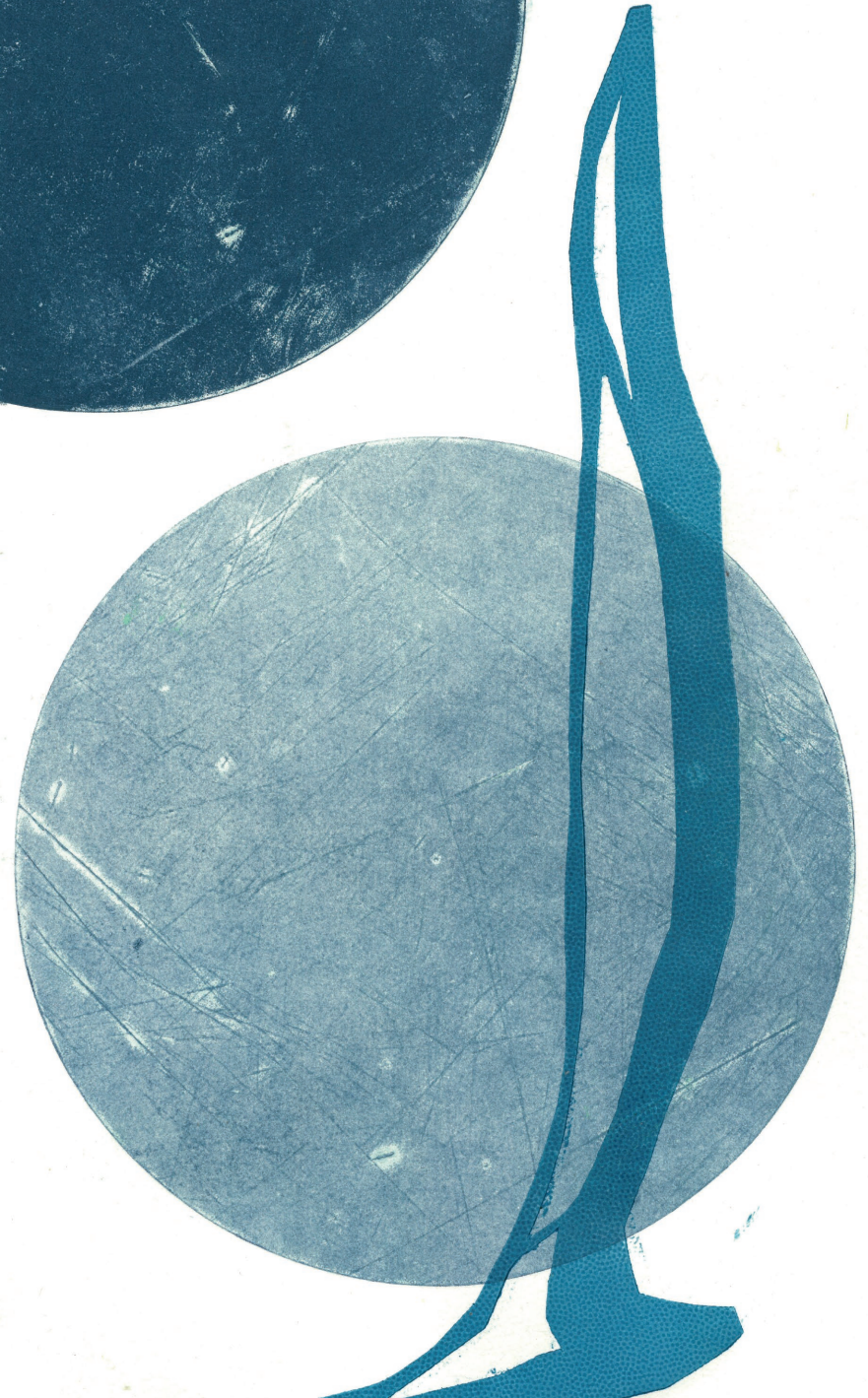
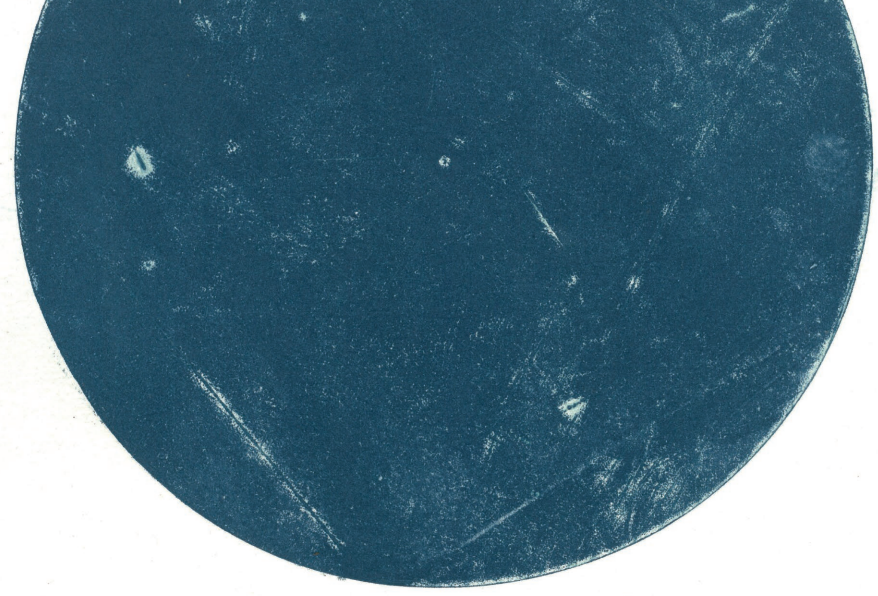
Beneath Contempt

Piercing the night
splintering the dark
the moon grins
as I bow beneath
battering emotion

She maintains callous distance
from piteous unworthy creature
who, forlornly seeking reassurance,
eagerly follows her nightly trek

Though I worship her
she cares not
she is a goddess bartering divinity
flirting with the stars

I creep bereft, unheeded
not deemed worthy of respect
as I crawl the floor
of the blue jewel planet





Scale of Judgement

Balance is weight repelled
a little here, a little there
shift the width of a spider's thread
and tragedy strikes

Life is full of small things
that cause disastrous consequences
a raised finger, angry words
will shift the air
bring black burdens to bend your back

Draw breath, stay calm
the world stays afloat
the rock at bay
the moon aloft

You and I, my friend,
must show the path
an easy laugh, a loving heart
will lead lost souls to safety

Beauty is in simple things
a smile, a kind word
that is where our strengths lie
not in silent anger or snarling
voice

Hurt boomerangs
so mind your ways
lest you too attract aversion
and simmering malice



Forest Moon

Tree trunk silhouettes
streamlined with golden light
intersect her luminous face

Glimpsed between leaf and bark
she summons us
stealing our heart

Fall to your knees
worship half seen glory
that blazes across the horizon
of timeless land

We are short-lived
our geography fleeting
ere we return to the soil
but she...

She is the tide
the gravity that pulls at us
that shapes us

She is the friend
who lights our path
through the forest



poetry

All poems © Lynn Scott-Cumming,
2021

image list

Front cover: Lynn Scott-Cumming, *Traverse the void*, Unique state print, 35.4 x 25.4cm. | **Page 2:** Lynn Scott-Cumming, *Balance*, Unique state print, 19 x 29.5cm. | **Page 3-4:** Lynn Scott-Cumming, *Leaping Moon*, Unique state print, 25 x 22cm. | **Page 5-6:** Lynn Scott-Cumming, *White Light* (detail), Unique state print, 30 x 23.3cm. | **Page 7:** Lynn Scott-Cumming, *Sentinels*, Unique state print, 33 x 20.7cm. | **Page 7-8:** Lynn Scott-Cumming, *Navigate via the Twin Moons*, Unique state print, 46.3 x 34.5cm. | **Page 9-10:** Lynn Scott-Cumming, *Major Balance*, Unique state print, 20.4 x 30cm. | **Page 10:** Lynn Scott-Cumming, *Cracked Moon* (detail), Unique state print, 19 x 33cm. | **Page 11:** Lynn Scott-Cumming, *Forest Moon*, Unique state print, 33 x 20.7cm. | **Page 13-14 (left):** Lynn Scott-Cumming, *Tides & Men*, Unique state print, 23.5 x 27.5cm. | **Back cover:** Lynn Scott-Cumming, *Enchantment Moon*, Unique state print, 29.5 x 40.5cm.

Red Sea

Red sea shrouds the sun
blood of my veins
obliterates sky

COVID sails the airwaves
brings fear
in the face of disease

Black sails stark reminder
that death comes to all

Over the horizon
blue sky is waiting
journeys start and end
the in-between may be long
or maybe short

Shall we journey on?

umbrella studio contemporary arts

408 Flinders St, Townsville | 07 4772 7109

www.umbrella.org.au

Tues - Fri 9am - 5pm Sat - Sun 9am - 1pm

Follow Umbrella's social media for updates, closures or changes to our COVID-19 restrictions. Access our COVID-Safe plan and details here: www.umbrella.org.au/covid-19 | Umbrella is supported by the Queensland Government through Arts Queensland & the Visual Arts and Craft Strategy, an initiative of the Australian, state and territory governments.

16 april - 23 may 2021

moon phase:
chasing transcendence

lynn scott-cumming



umbrella
studio contemporary arts



Queensland
Government



Australian Government
Visual Arts and Craft Strategy
Queensland

SUPPORTED BY



City of
Townsville

Townsville
Bulletin